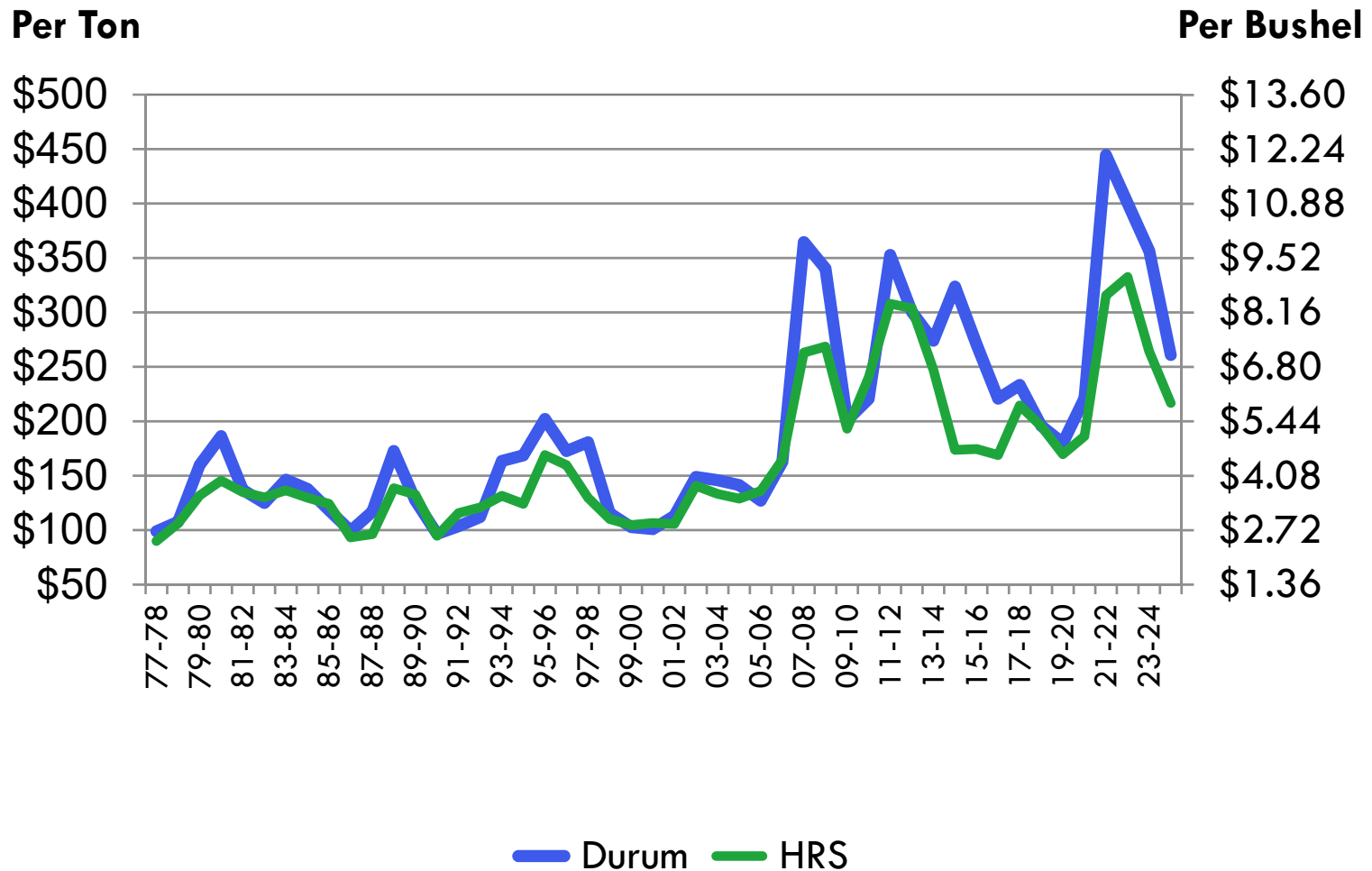


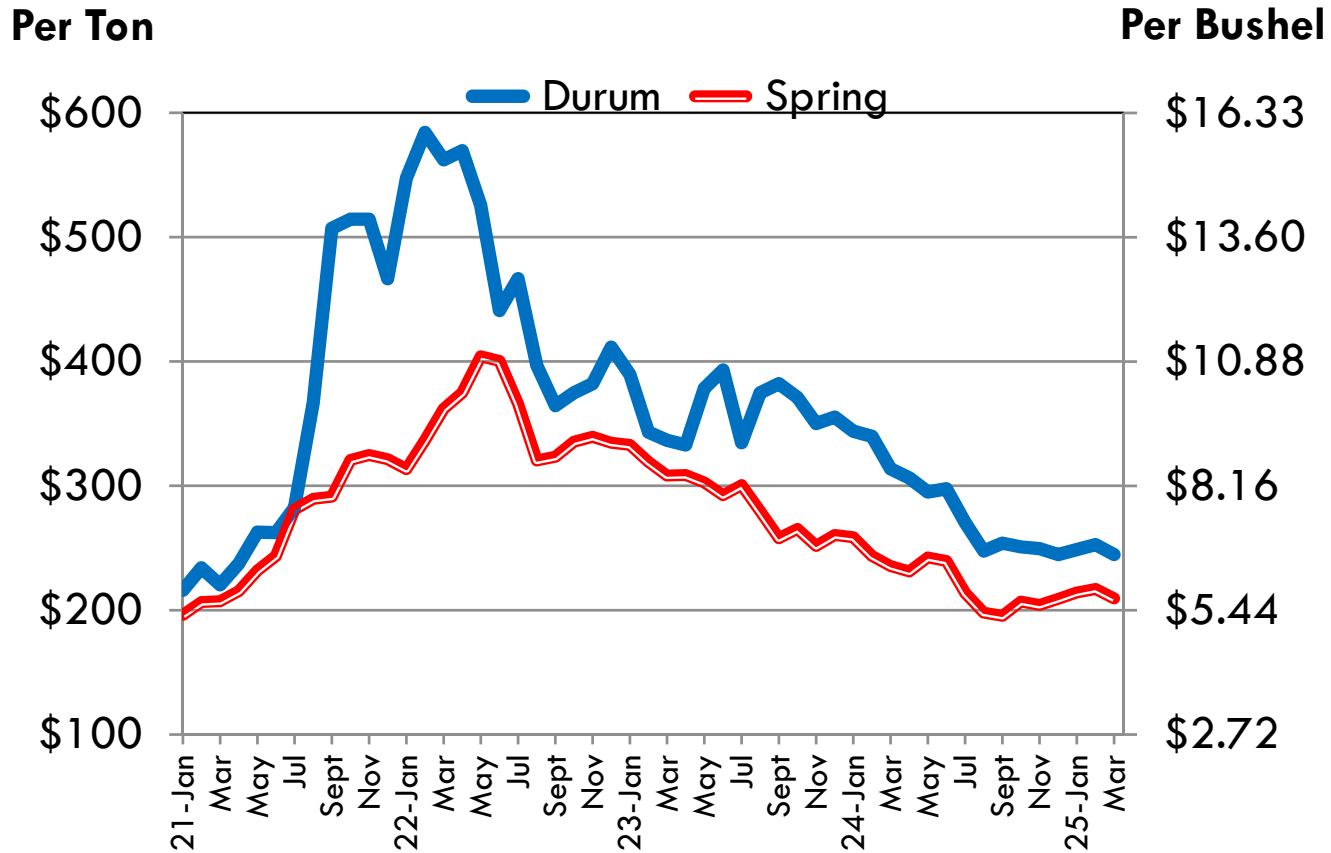
U.S. AVERAGE FARM PRICES (Long Term)



Source: USDA, Annual Price Summary

4/10/25

U.S. AVERAGE FARM PRICES

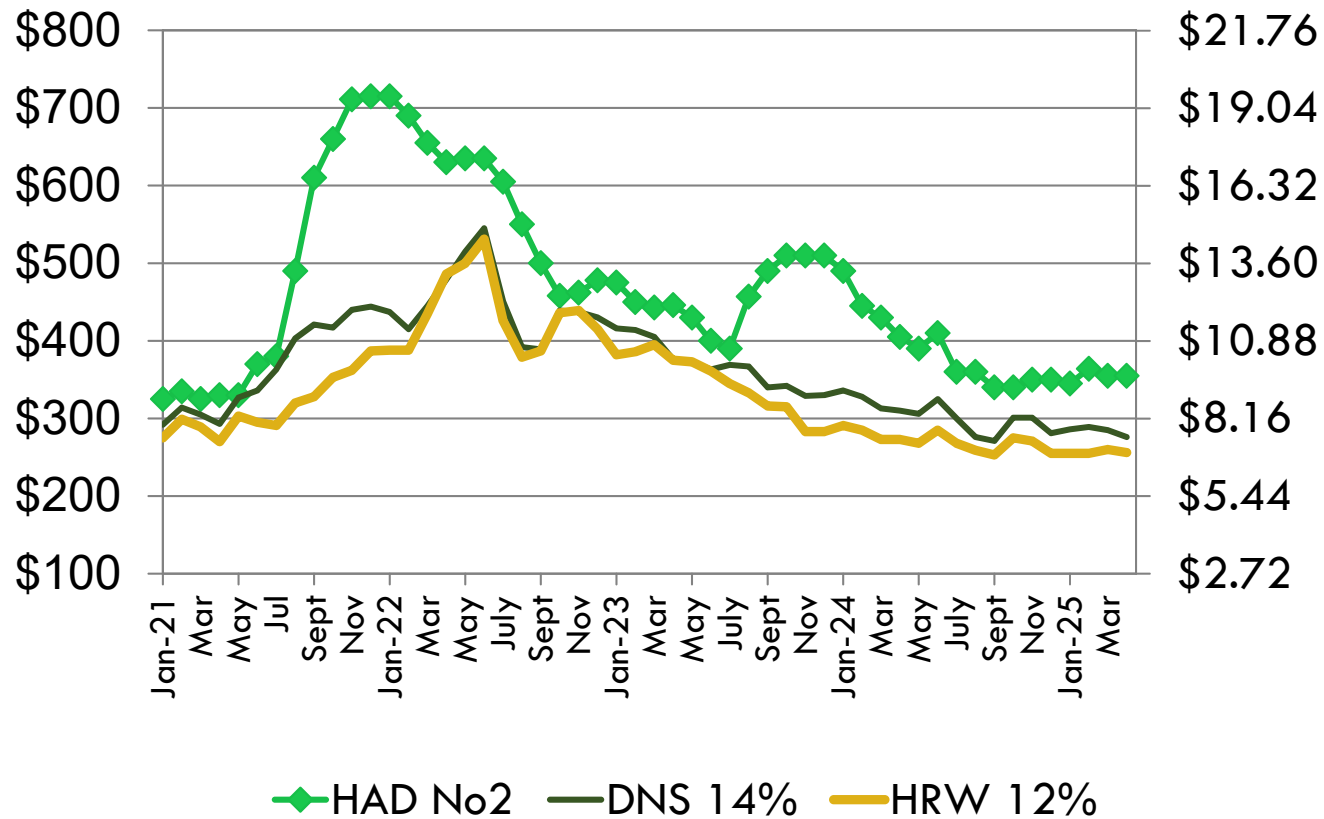


Source: USDA, Annual Price Summary
4/30/2025

PRICE TRENDS AT GULF

Per Metric Ton

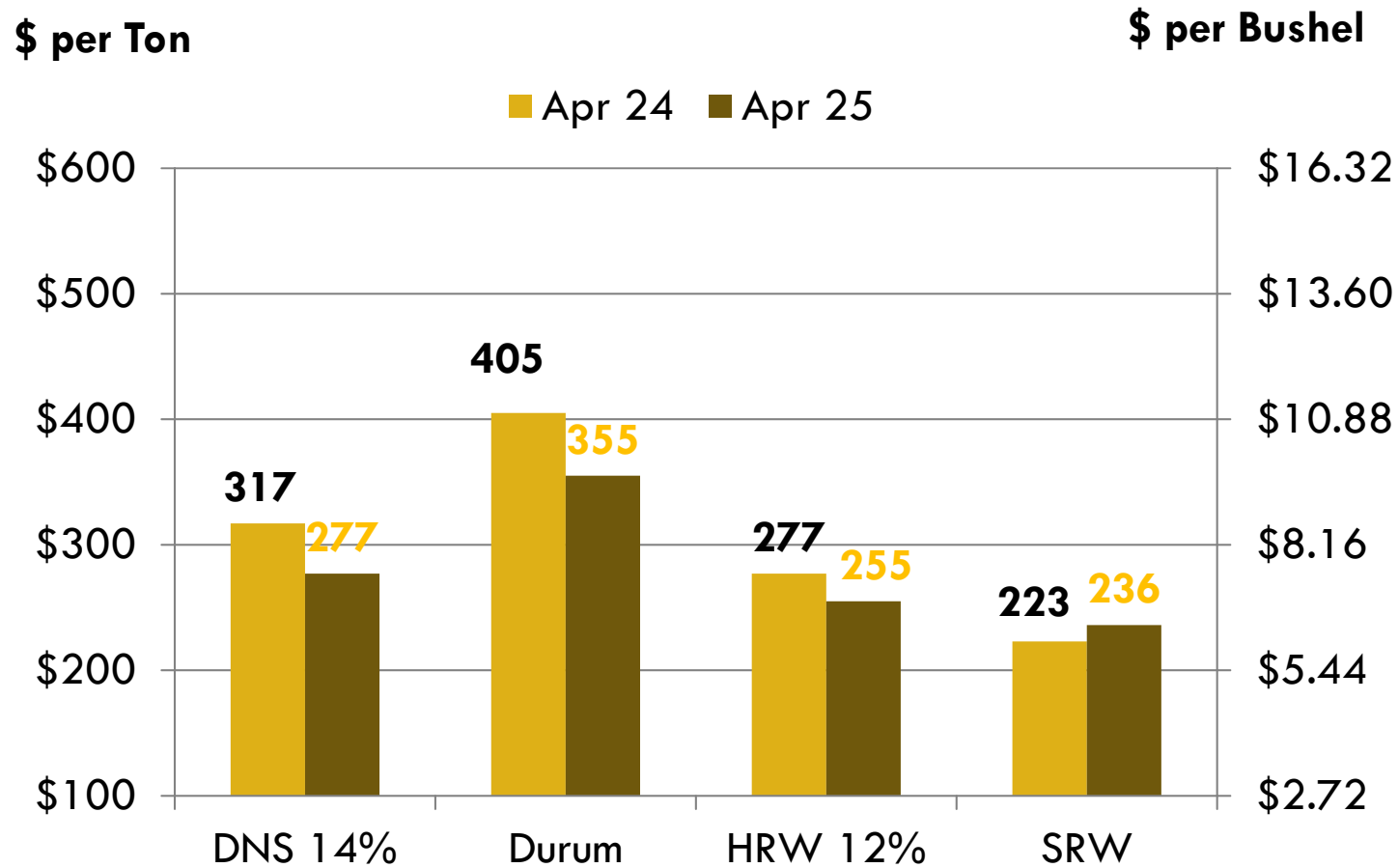
Per Bushel



Source: USDA, Annual Price Summary

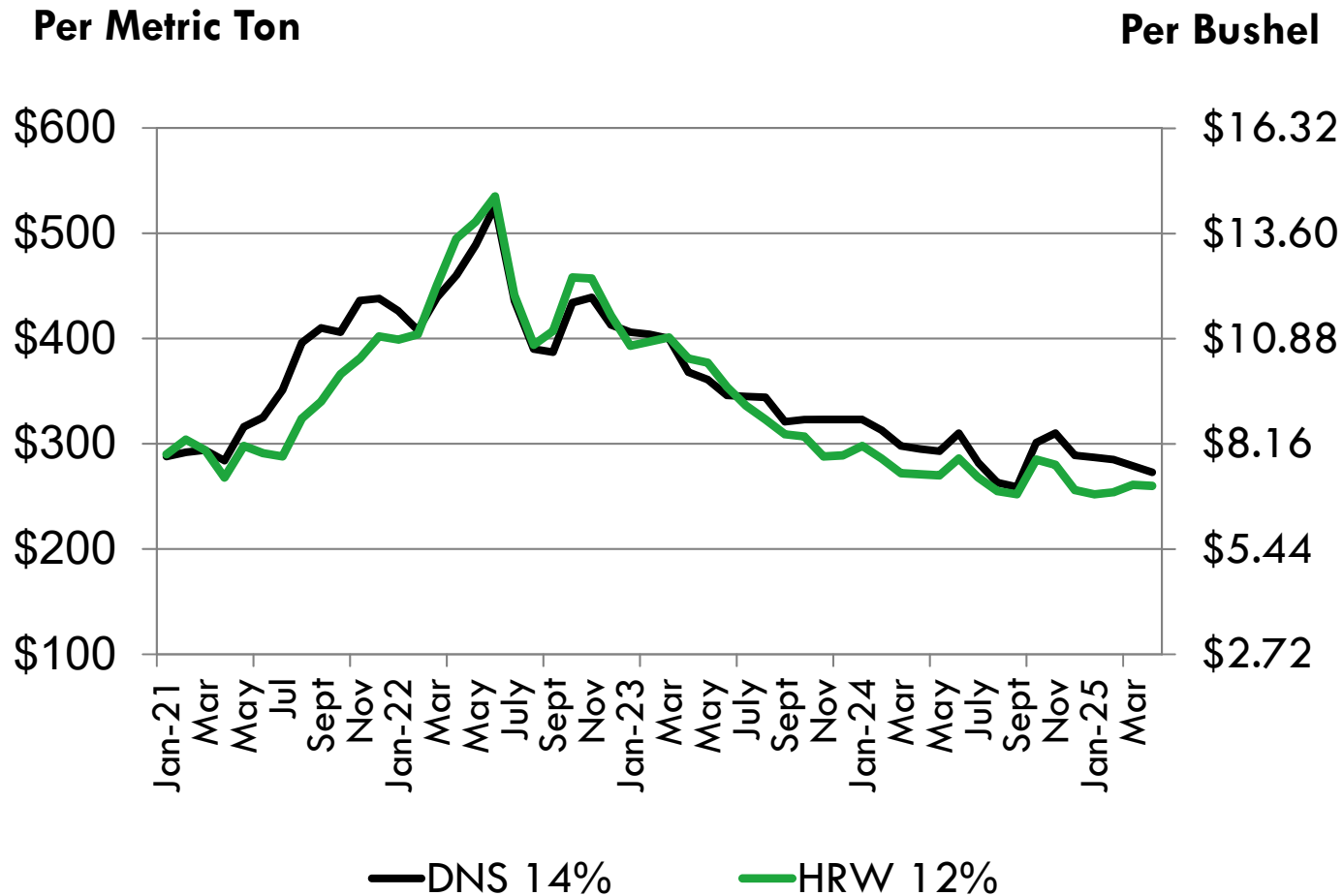
4/10/25

U.S. WHEAT PRICE CHANGE AT THE GULF



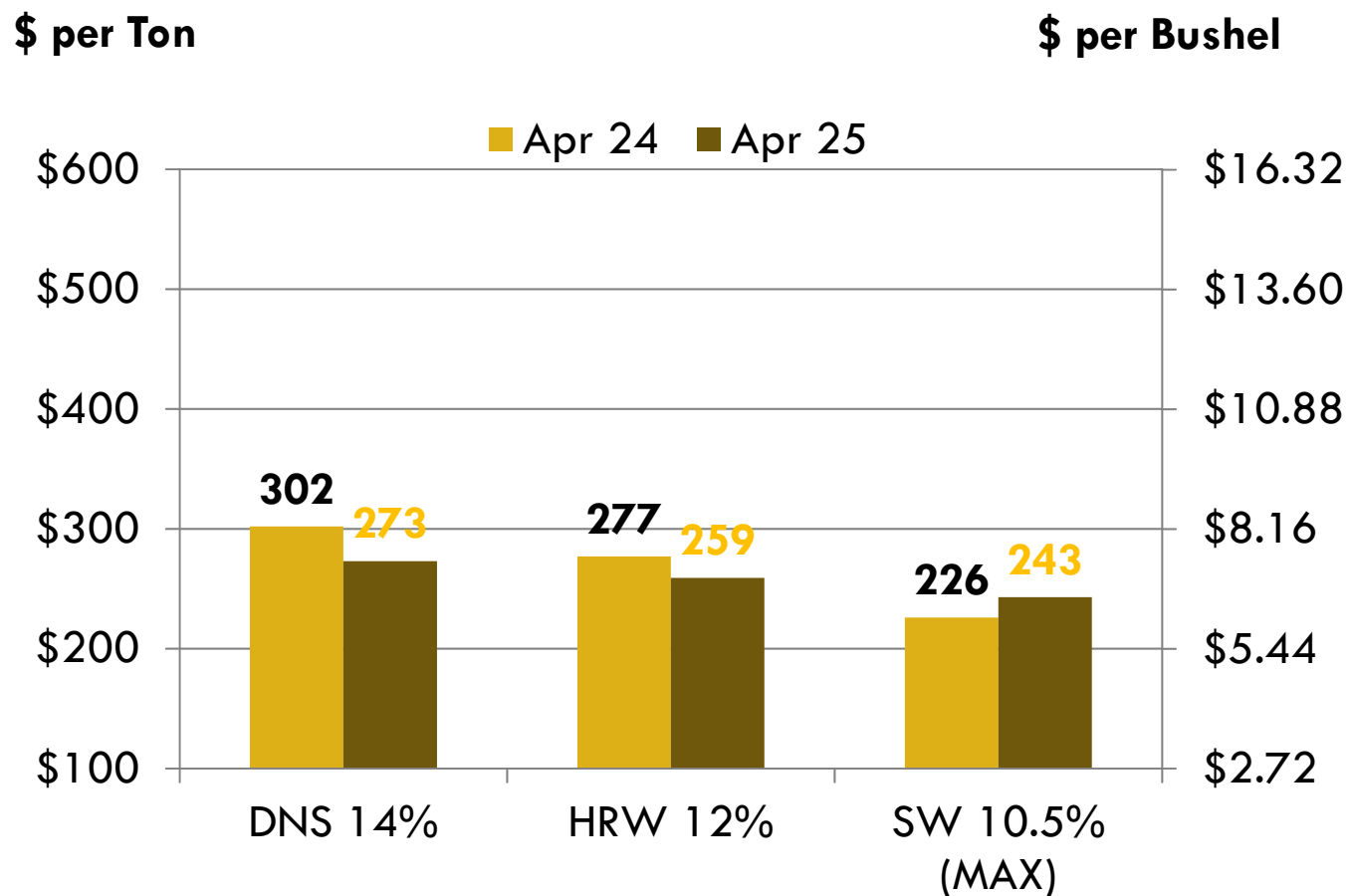
3/11/25

PRICE TRENDS AT THE PNW



Source: USDA, Annual Price Summary
4/10/25

U.S. WHEAT PRICE CHANGE AT THE PNW

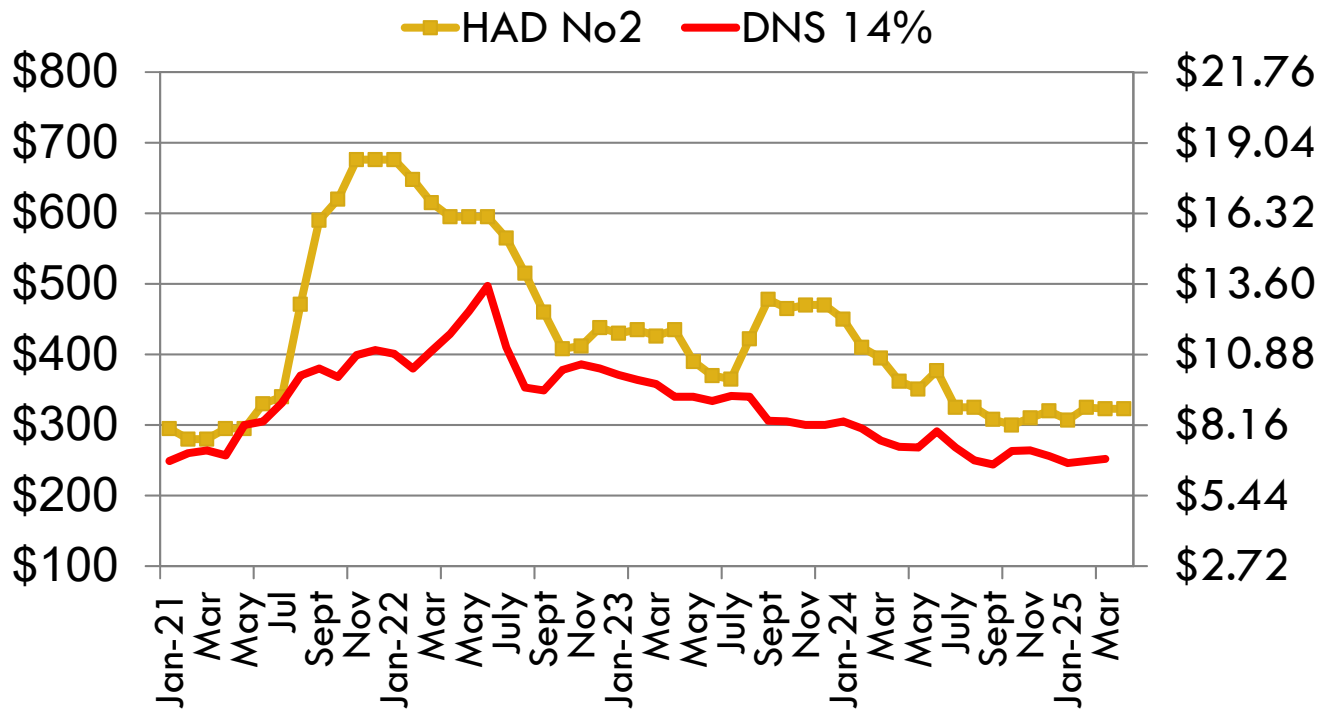


3/11/25

PRICE TRENDS AT THE LAKES

Per Metric Ton

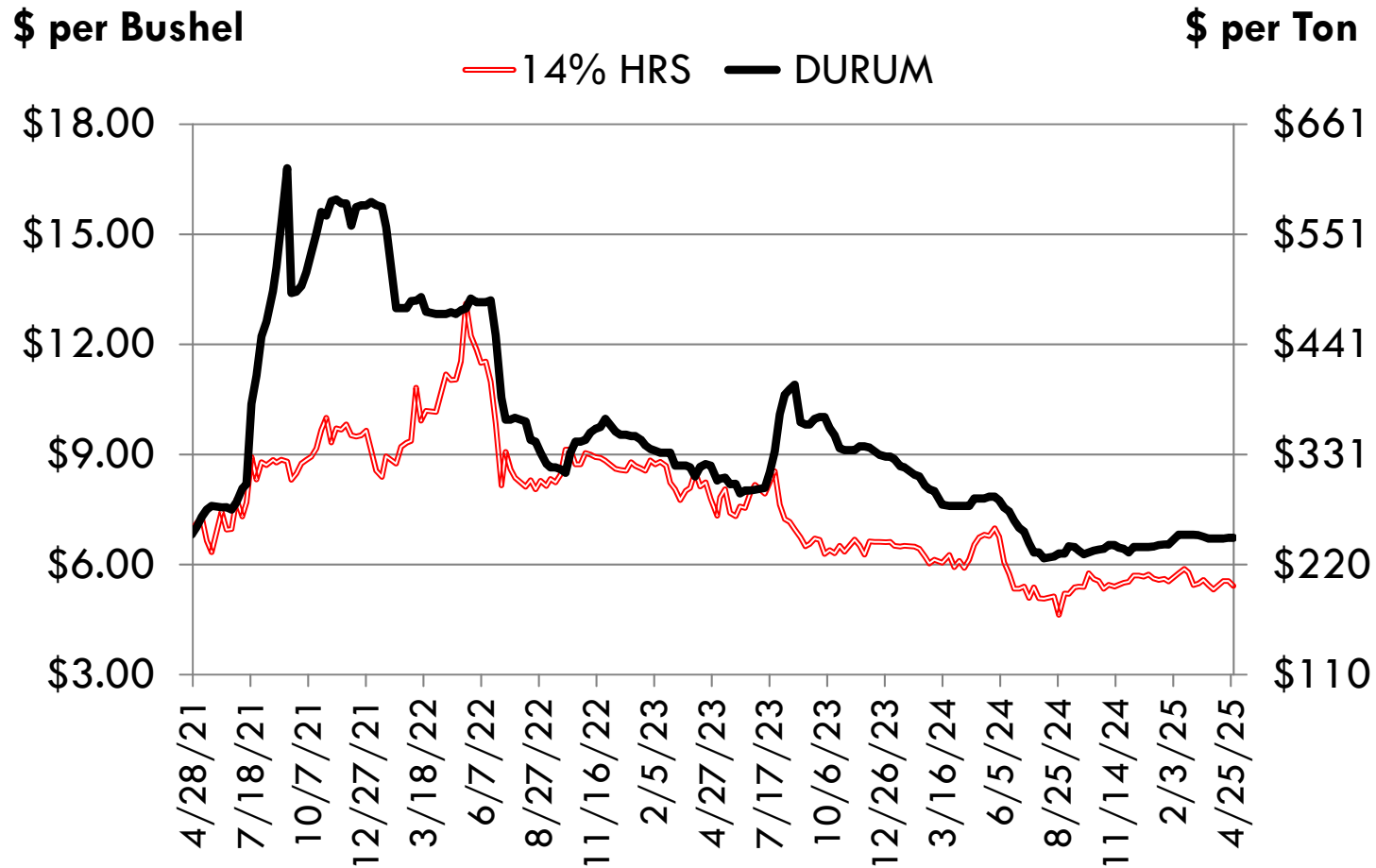
Per Bushel



Source: USDA, Annual Price Summary

4/10/25

Average N.D. Hard Red Spring and Durum Wheat Producer Bids



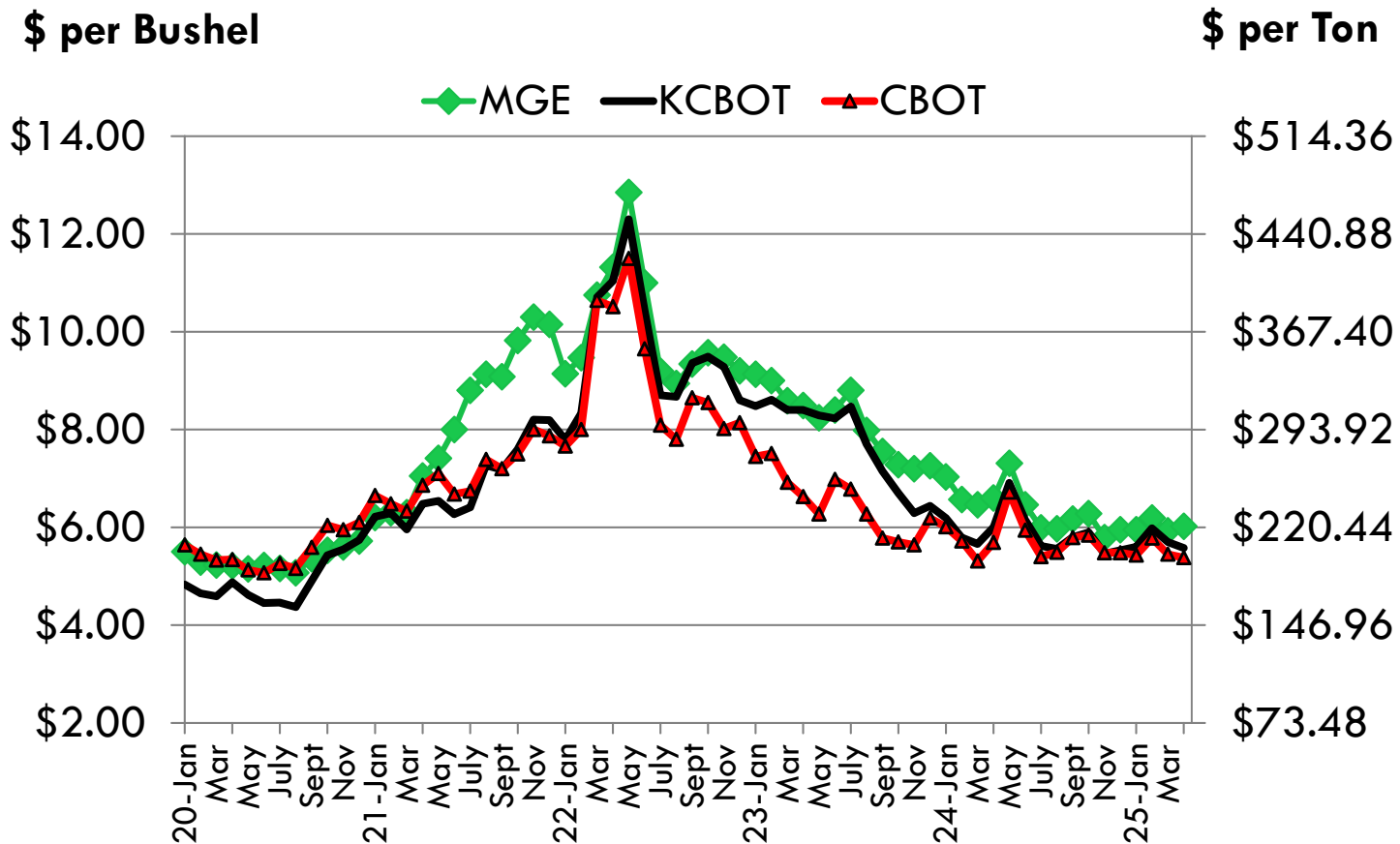
Source: Elevator weekly prices 4/28/25

U. S. FUTURES TRENDS

Minneapolis – Hard Red Spring

Kansas City – Hard Red Winter

Chicago – Soft Red Winter – World prices



4/10/25